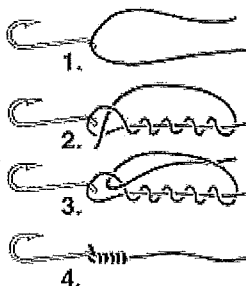


Tackle Tips

Knots to Attach Snaps, Swivels, Lures, Flies, Sinkers and Hooks

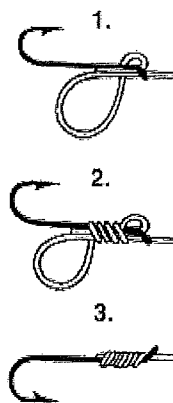
Improved Clinch Knot

1. Pass the line through the hook or swivel eye once and pull it back towards the line.
2. Make five turns or "S" twists with the free end of the line around the main line.
3. Pass the end of the line between the eye and the first loop formed.
4. Bring the end through the large loop just formed and slowly pull tight while holding the free end by your thumb and forefinger.
5. After pulling tight, cut off any extra line coming out of the knot.



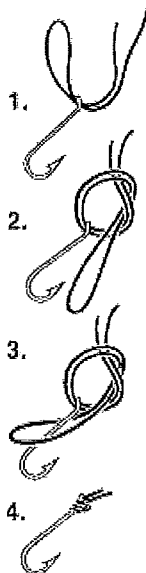
Snell Knot

1. Pass the line through the eye, forming a loop, and pass it through the eye again in the opposite direction.
2. Take the part of the loop closest to the eye and wrap it over the shank seven or eight times.
3. With the long end of the line in your right hand and the wraps held in your left hand, slowly and steadily pull the starting line until the line is almost tight. Then grasp the tag end with your fingers or a pair of pliers and pull it and the standing line at the same time until the knot is tight.



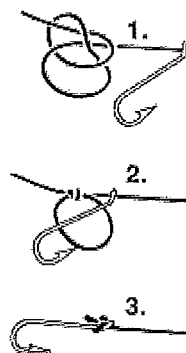
Polomar Knot

1. Make a loop and pass it through the eye.
2. Make a loose overhand knot with the double line.
3. Put the loop over the item (hook, lure, swivel).
4. Slowly pull tight both ends of the line.



Turtle Knot

1. Pass the line through the eye and tie a single running knot at the end of the line, forming a loop.
2. Pass the fly or hook through the loop.
3. Pull the knot tight behind the eye.
4. Snip away extra line.

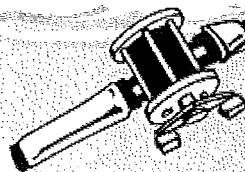


Fish Facts

Fish have no eyelids so they can't close their eyes. This is one reason why fish often like to hide in the shade or other dark places.

Fishing Deeper

1. Demonstrate to your family how to attach a hook to a line with a snell knot.
2. Teach your family or a friend how to tie a fishing knot.



Sharp Teeth, Sharp Spines

As you know fish are interesting creatures with many unique characteristics that separate them from other creatures in the animal kingdom. One way to more fully understand fish is to know each of their parts – both inside and outside parts. In this activity you'll learn over 20 parts.

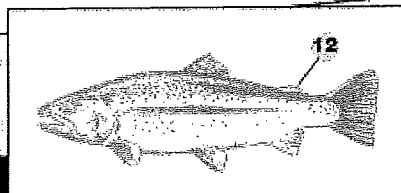
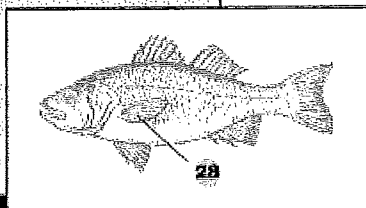
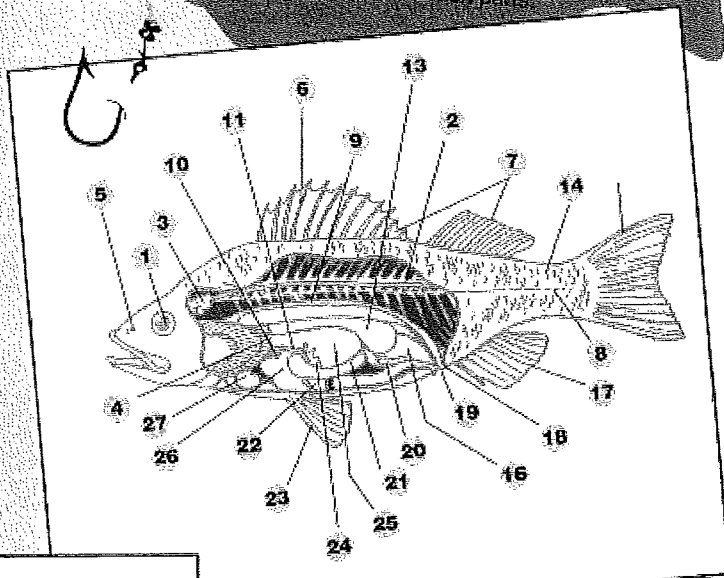
Baiting the Hook

Complete each of the internal and external fish parts in the Fish Parts Crossword.

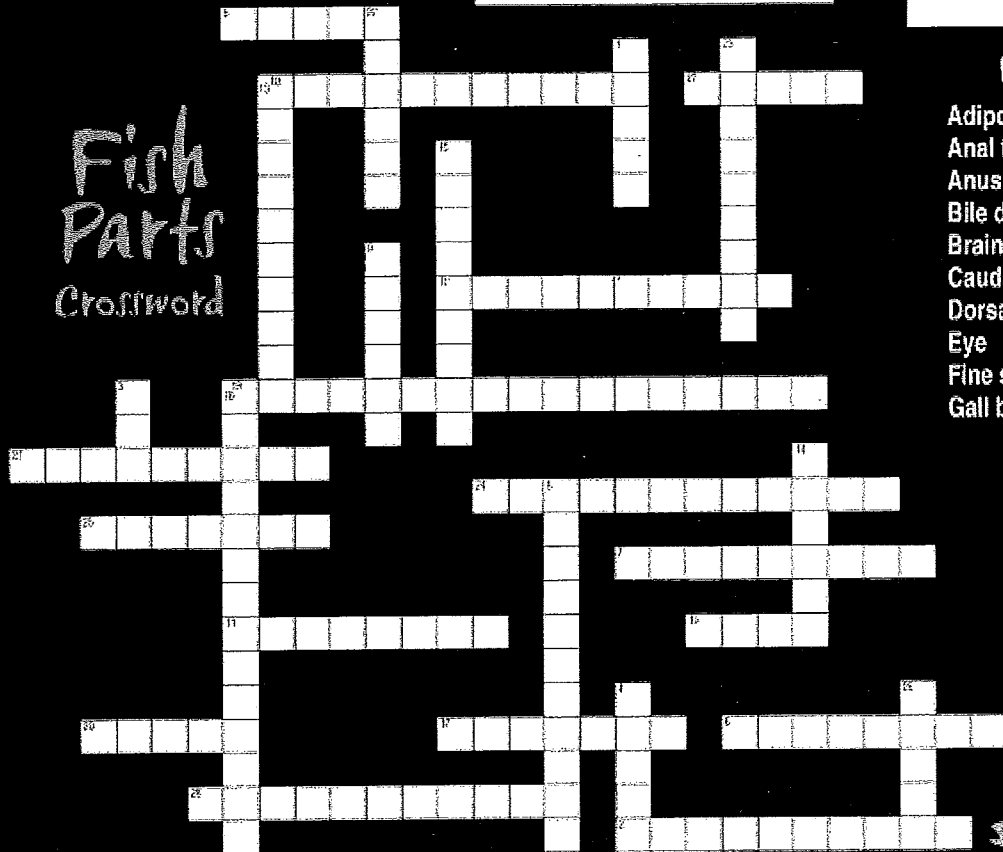
Fishing Project Skill:
Life Skill

Success Indicator:

Identifying parts of a fish
Learning to learn
researching information
Identifies 10 external and 10
internal fish parts



Fish Parts Crossword



Fish part words

- | | |
|--------------|--------------------|
| Adipose fin | Gas bladder |
| Anal fin | Gills |
| Anus | Gonad |
| Bile duct | Heart |
| Brain | Intestine |
| Caudal fin | Kidney |
| Dorsal fin | Lateral line |
| Eye | Liver |
| Fine spine | Nares (nostrils) |
| Gall bladder | Pectoral fin |
| | Pelvic fin |
| | Pyloric cecum |
| | Scales |
| | Spinal cord |
| | Spleen |
| | Stomach |
| | Urinary bladder |
| | Urogenital opening |